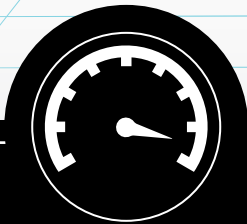




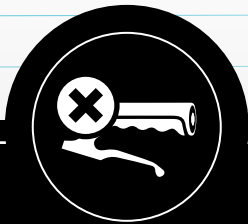
**STRONG VEHICLE
BODY**



**EASY HOME
CHARGING**



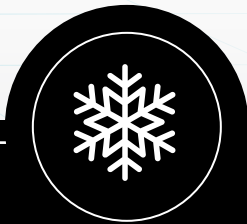
**TOP SPEED
45 kmph**



**CLUTCHLESS
& GEARLESS**



**NO VIBRATION
NO NOISE**

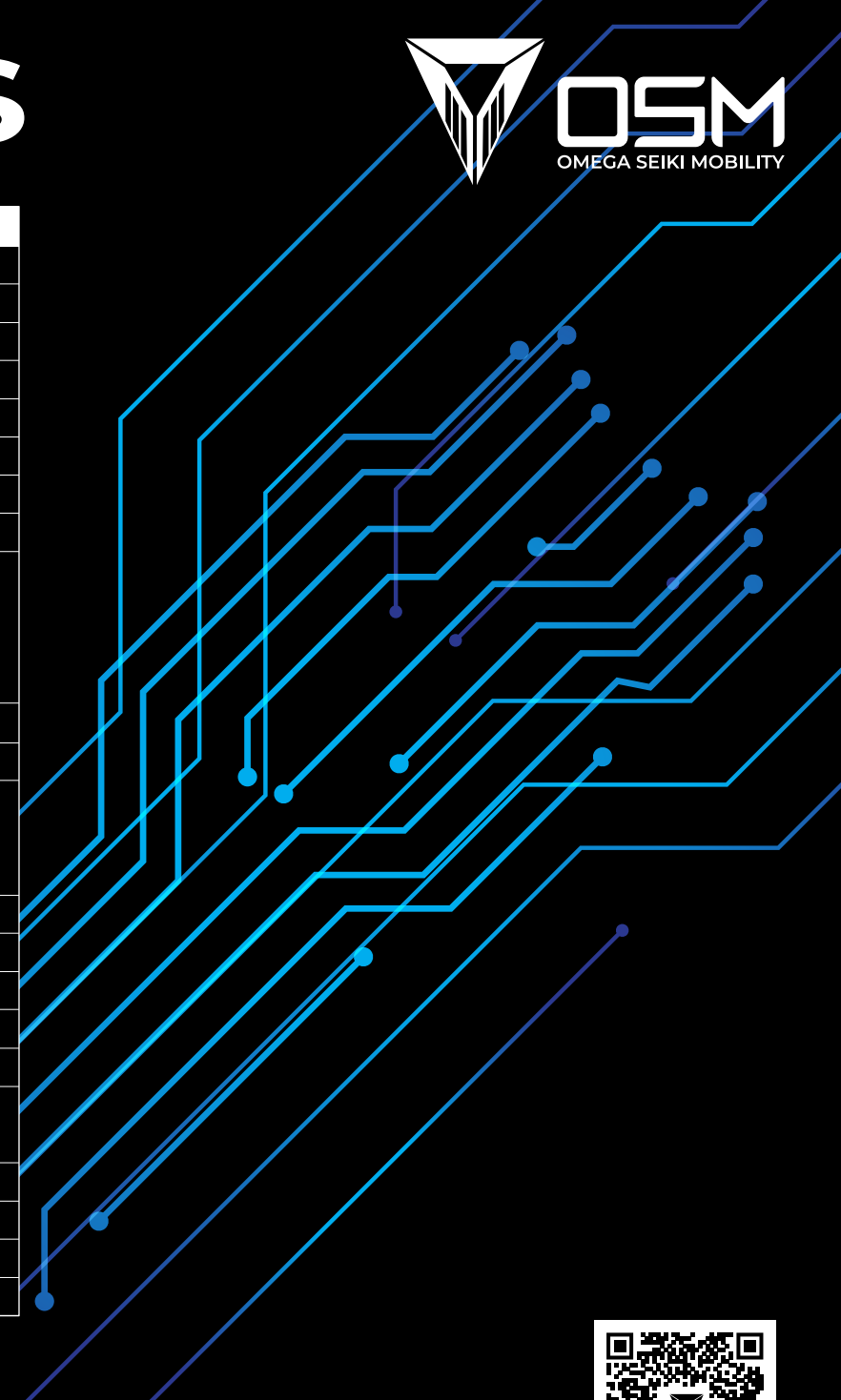


**COOLING
UP TO 0°C**

SPECIFICATIONS



MODEL	RAGE+ FROST
OUTER DIMENSION	1660 MM X 1474 MM X 1400 MM
INNER DIMENSION	1560 MM X 1374 MM X 1300 MM
INNER VOLUME	100 CFT
EXTERNAL SKIN	GRP SHEET 1.5 MM
INTERNAL SKIN	GRP SHEET 1.5 MM
PUF	50 MM PUF, IN - HOUSE PRODUCED USING DOW POLYOL AND ISO
DENSITY	40+/-2 KGM-3, WITH FR GRADE PUF
SUB FRAME	GALVANIZED IRON PROFILE 2 MM STRUCTURE
FLOOR	SANDWICH FLOORING, 2MM GRP REINFORCED, 50 MM PUF WITH GI OMEGA STRUCTURE, LAYERED WITH 4 MM THICK WATERPROOF MARINE GRADE PLYWOOD WITH ANTI-SKID GRP PASTED ON PLYWOOD
FLOOR FINISH	ALUMINIUM CHECKERED SHEET WIDTH-200 X1.2MM QTY. 03 NOS.
SIDEWALL, FRONT WALL, ROOF	3 LAYER PANEL, GRP SHEET 1.5 MM+ 50 MM PUF+ GRP SHEET 1.5 MM
DOOR	THE INSULATED BODY WILL HAVE A ONE-PIECE FRP SHELL - FITTED WITH J RUBBER GAS KIT AND SS LOCKSET AND HINGES. 270 DEGREE OPENING.
DOOR INNER SKIN	GRP SHEET
DOOR OUTER SKIN	GRP SHEET WITH PLYWOOD
DOOR SEAL	J RUBBER EPDM COMPOSITE SEALING
DOOR HINGES	SS HINGES
LOCKSET	SS LOCKING SET MECHANISM
BASE FRAME	3 MM MS Z, SECTION FRAME IS INTEGRATED WITH CHASSIS USING GI FORKS AND U BOLTS/BRACKETS
EXTRUSIONS-CORNER	ALUMINIUM PROFILE 2 MM
RANGE	80 KM/CHARGE
VEHICLE WARRANTY	3 YEARS OR 80,000 KMS (WHICHEVER IS EARLIER)
LOADING CAPACITY	UP TO 400 KG



www.omegaseikimobility.com



93119-11481

